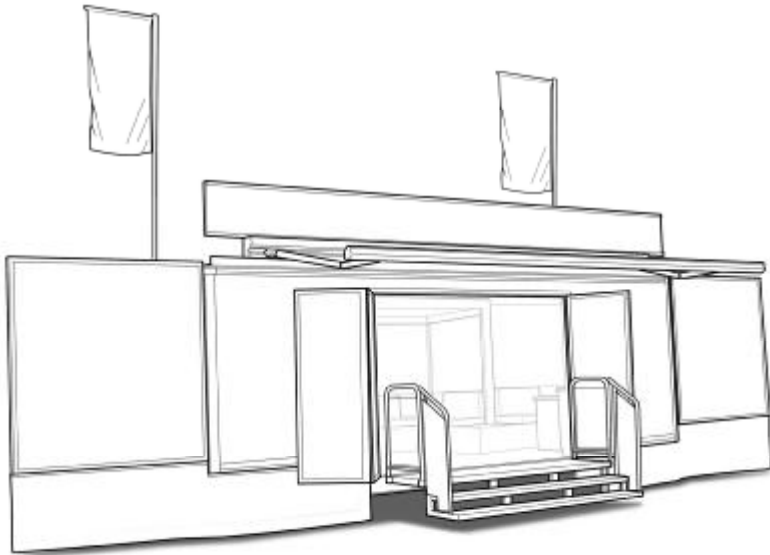


**DAVID WILSON'S TRAILERS Ltd**  
Putting your information on the road



## **DWT H36- 7m Hospitality Trailer**

*For Personal Service*



tel: **+44 (0)1476 860833**  
**[www.dwt-exhibitions.co.uk](http://www.dwt-exhibitions.co.uk)**

DWT is a leading UK provider of mobile exhibition and outdoor event solutions  
Based just off the A1 near Colsterworth in Lincolnshire- in the strategic heart of Britain- our operating centre enables us to deliver and set up exhibition trailers in a single day



## DWT H36- 7m Hospitality Trailer



**DWT H36** This trailer has been designed to have a very low entrance height to make it more accessible and welcoming to visitors. There is a wind out awning providing protection from the weather and brightening its appearance. To each end are optional fold out white display wing panels to accept client branding as well as a full length lift up headboard and two 20ft flagpoles to maximise your promotional messages and corporate identity.



## DWT H36- 7m Hospitality Trailer



### Interior includes :

- Seating for up to 12 with storage space beneath.
- Literature storage cupboards
- Slat walling either side of entrance for literature
- Compact Galley, with fridge, sink and cupboards
- Lift up wall mounted desk
- Large slide out extension pod with hospitality seating and storage space
- Nyloop graphic panels in Blue
- 3 off Double sockets located throughout
- Adjustable spot track lighting
- Strip lighting above all interior graphic panels

### Exterior includes :

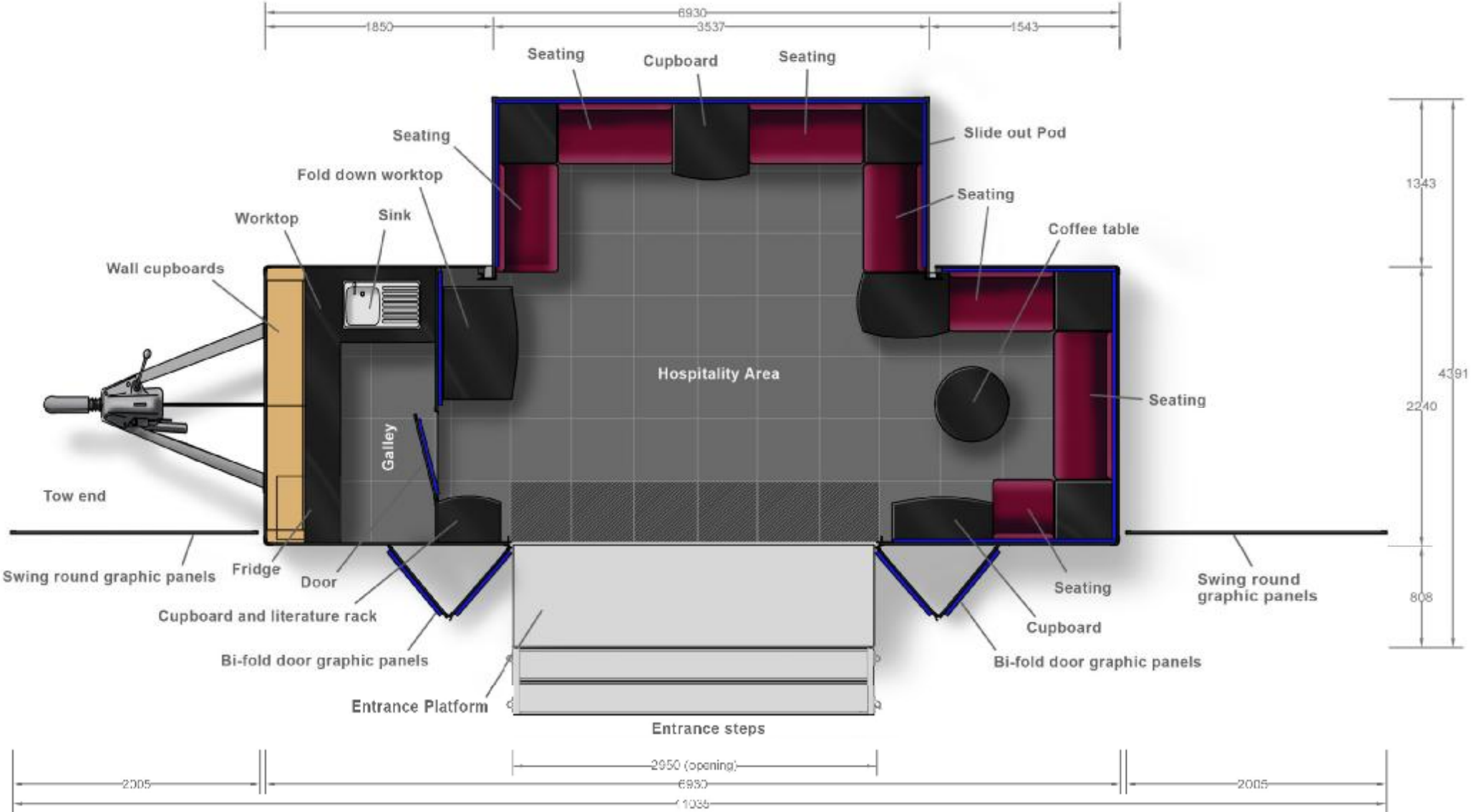
- Hinge down entrance platform with clip on steps and handrails
- Bi-fold graphic panels covered in Blue Nyloop panels
- Front and rear Swing round graphic panels
- Full length roof mounted head board
- 6m Roof mounted wind out awning
- 2 off 20ft Flagpoles fitted to the offside
- 240v mains inlet power supply with extension cable
- Grey PVC skirting





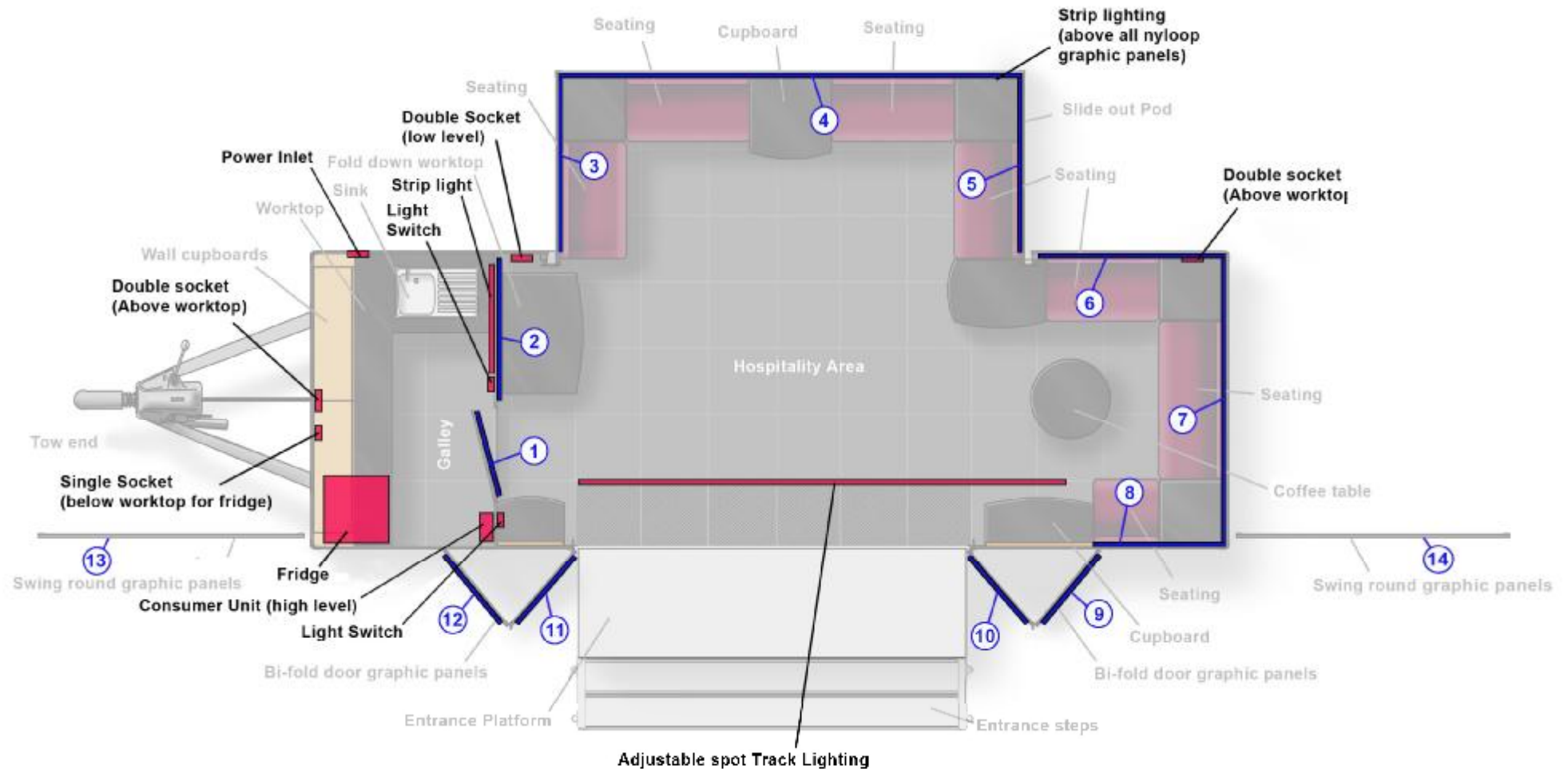
# DWT H36- 7m Hospitality Trailer

## Layout Plan



# DWT H36- 7m Hospitality Trailer

## Electrical Plan



### Interior Nyloop Graphic Panel Dimensions (mm)

- |                      |                      |
|----------------------|----------------------|
| 1- 570(w) x 1220(h)  | 5- 1365(w) x 1070(h) |
| 2- 1070(w) x 1220(h) | 6- 1400(w) x 1220(h) |
| 3- 1370(w) x 1070(h) | 7- 2185(w) x 1220(h) |
| 4- 3485(w) x 1070(h) | 8- 1025(w) x 1220(h) |

### Exterior Branding Boards

Blue Nyloop:

- 09- 675(w) x 1945(h)
- 10- 665(w) x 1945(h)
- 11- 670(w) x 1945(h)

- 12- 660(w) x 1945(h) Please allow for the door lock
- Swing round GRP panels:
- 13- 1926(w) x 1926(h)
- 14- 1926(w) x 1926(h)

### Roof mounted Lift up Headboard-

Slide in Foamex Board size:

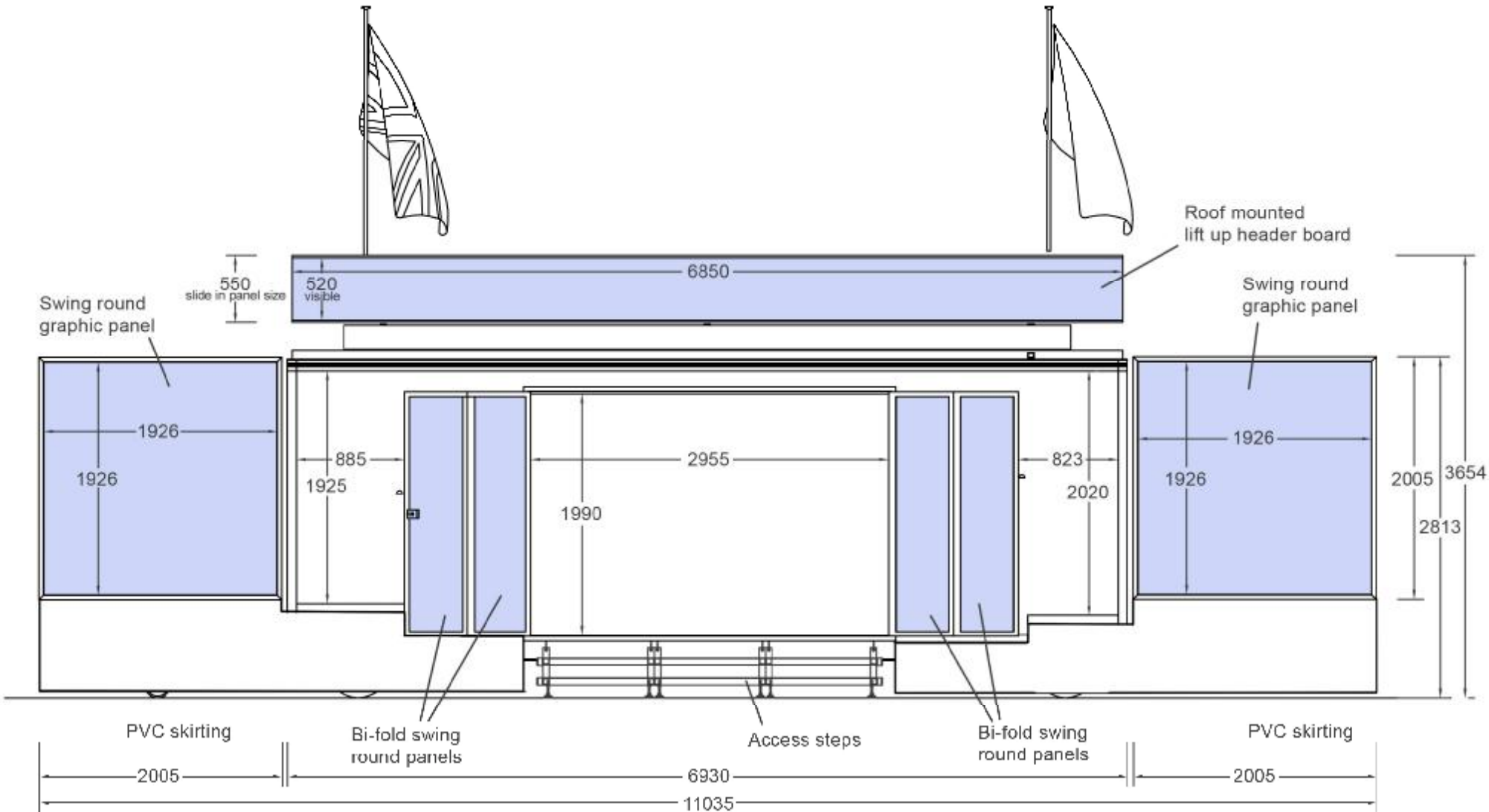
**6850(w) x 550(h)(520 visible) x 6**

Or, Vinyl graphic area:

**6850(w) x 520(h)**

# DWT H36- 7m Hospitality Trailer

## Nearside Graphic Area Elevation





# DWT Head Office Location Map



**David Wilson's Trailers Ltd**  
Jubilee Park,  
Honey Pot Lane,  
Colsterworth,  
Lincolnshire  
NG33 5LZ

tel: **+44 (0)1476 860 833**  
email: **info@dwt-exhibitions.co.uk**  
web: **www.dwt-exhibitions.co.uk**

